

Parliament APARTMENT HOMES



Directions: located at the intersection of I-25 and I-225.



Parliament APARTMENT HOMES



4363 South Quebec Street
Denver, Colorado 80237
303-741-4141 fax 303-741-1935



The Parliament, Denver's premier address, is located at I-25 and I-225 within walking distance of the Denver Tech Center and just a few minutes from any point in the Metropolitan area. You are also close to many parks and public golf courses. Shopping such as Tamarac Square and Park Meadows Mall are close as well as many fine restaurants and entertainment. I-225 provides easy access to Denver International Airport.

Our community offers one clubhouse, conference room, a state-of-the-art fitness facility, a heated outdoor pool, hot tub and garages with elevator access and carports. All of this is surrounded by award winning landscape with gazebos, scenic walkways, and a beautiful courtyard with an English clock tower.

Our contemporary one and two bedrooms may include such designer features as built-in bookshelves or a fireplace, mini-blinds, wine racks, ceiling fans and extra storage. Your apartment home includes a washer/dryer, a private patio or balcony, self-cleaning oven, and a frost-free refrigerator.





Residence FEATURES

1 & 2 Bedroom Apartment Homes

Garden and Mid-Rise Style



Washer & Dryer in Every Home

Bookshelves and Fireplaces Offered in Select Homes



Beautiful Courtyard Featuring a Pavilion, Clock Tower & Fountain Seating Area

Business Center with High-Speed Internet Access

Elegant Clubhouse, Conference Center, Fitness Center, Heated Pool & Hot Tub



Carports & Underground Parking Available

Community HIGHLIGHTS

1. Spacious walk-in closets
2. High-speed internet access
3. Pet friendly!
4. Great location
- 5.
- 6.
- 7.
- 8.
- 9.
- 10.
- 11.
- 12.
- 13.
- 14.



Residence FLOORPLANS



Windsor

Two Bedroom and Two Bath
Up to 900 Square Feet



Kensington

Two Bedroom and Two Bath
Up to 977 Square Feet

Residence FLOORPLANS



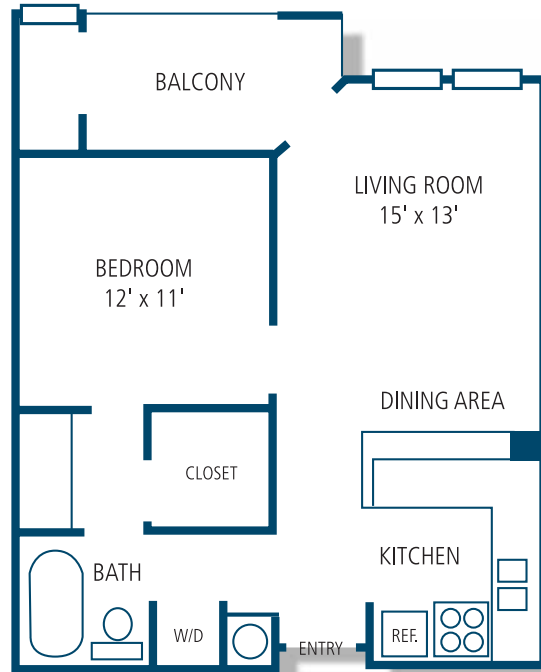
Chelsea

One Bedroom and One Bath
Up to 489 Square Feet



Mayfair

One Bedroom and One Bath
Up to 529 Square Feet



"A Great place to come home to."

Residence FLOORPLANS

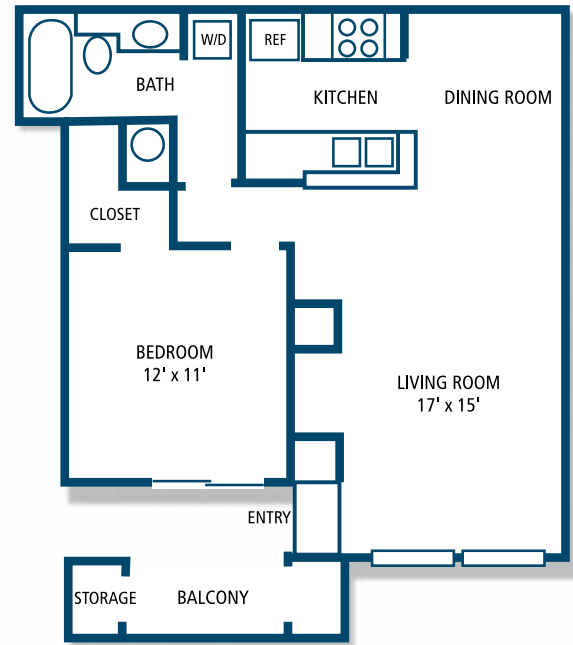
Somerset

One Bedroom and One Bath
Up to 621 Square Feet

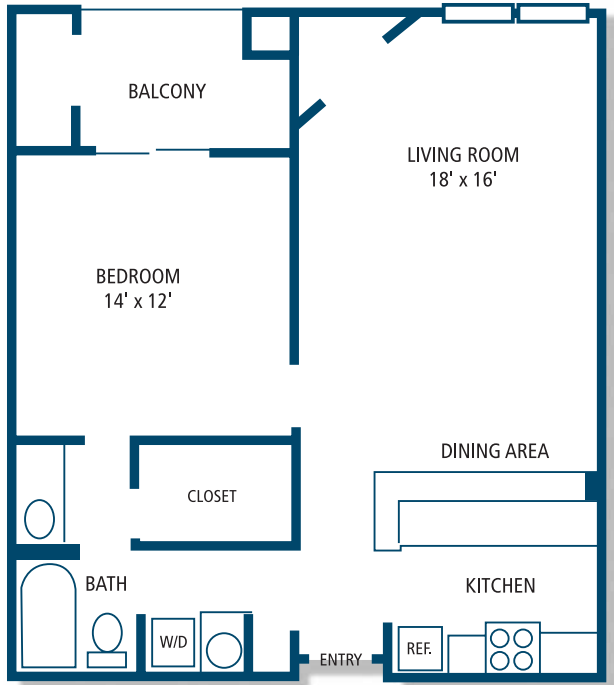


Canterbury

One Bedroom and One Bath
Up to 679 Square Feet



Residence FLOORPLANS

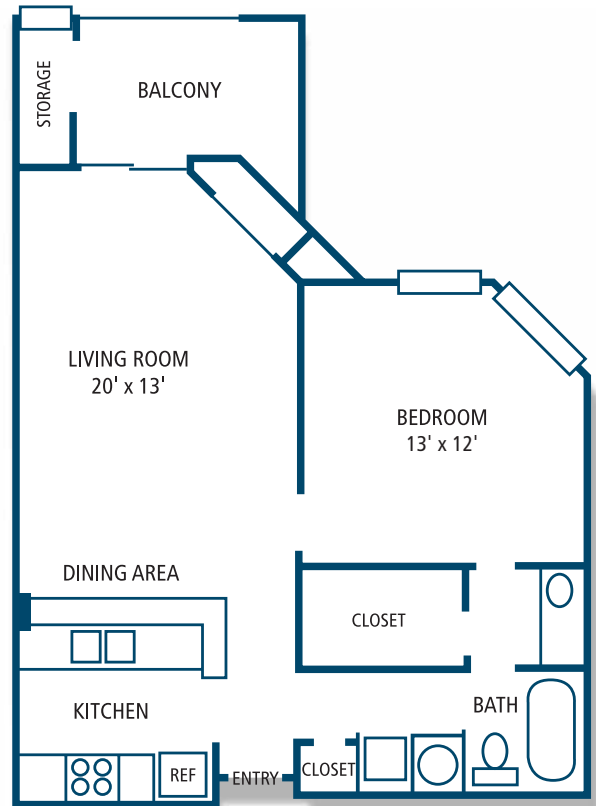


Avon

One Bedroom and One Bath
Up to 729 Square Feet

Buckingham

One Bedroom and One Bath
Up to 800 Square Feet



"Luxury apartment living."